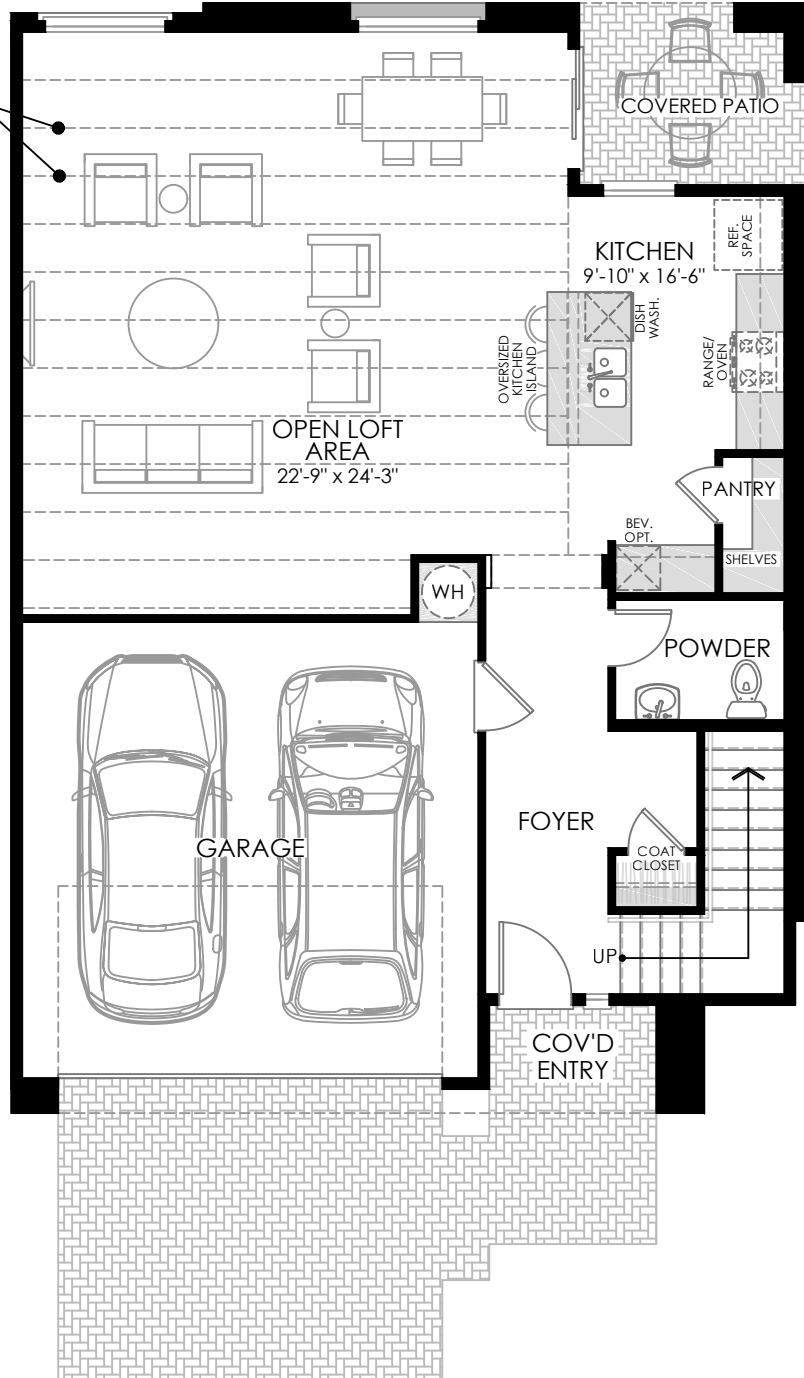


EXPOSED
RAFTERS



1ST FLOOR

ALL FLOOR PLANS AND ELEVATIONS ARE CONCEPTUAL AND WILL VARY FROM THE ACTUAL CONSTRUCTION DRAWINGS AND HOMES THAT ARE BUILT. SIZES, COLORS AND FEATURES ARE APPROXIMATED FOR ILLUSTRATION PURPOSES ONLY AND MAY NOT ACCURATELY DEPICT THE FINISHED PRODUCT THAT IS CONSTRUCTED IN THIS COMMUNITY. IMAGES MAY SHOW OPTIONS AND UPGRADES, FURNITURE, AND LANDSCAPING WHICH MAY OR MAY NOT BE AVAILABLE AT THE TIME OF PURCHASE. ALSO, IF SPECIFIC CONSTRUCTION DEADLINES HAVE PASSED, SOME OPTIONS MAY NO LONGER BE AVAILABLE FOR PURCHASE AND INSTALL. MODELS AND DEMONSTRATION HOMES MAY DISPLAY DECORATOR ITEMS AND FURNITURE THAT ARE NOT AVAILABLE FOR PURCHASE. PLEASE VISIT THE COMMUNITY FOR DETAILED INFORMATION AND DISCLOSURES ABOUT ALL ASPECTS OF THE COMMUNITY AND EACH HOME.

SHEET
1 OF 2

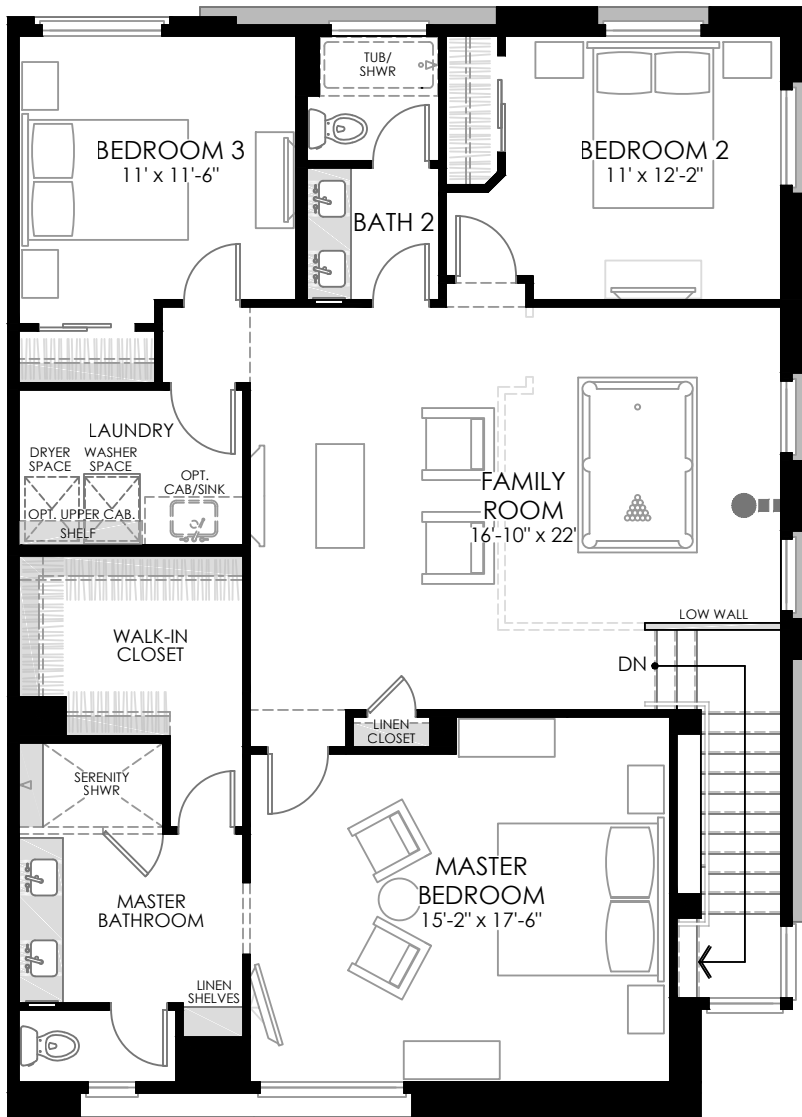
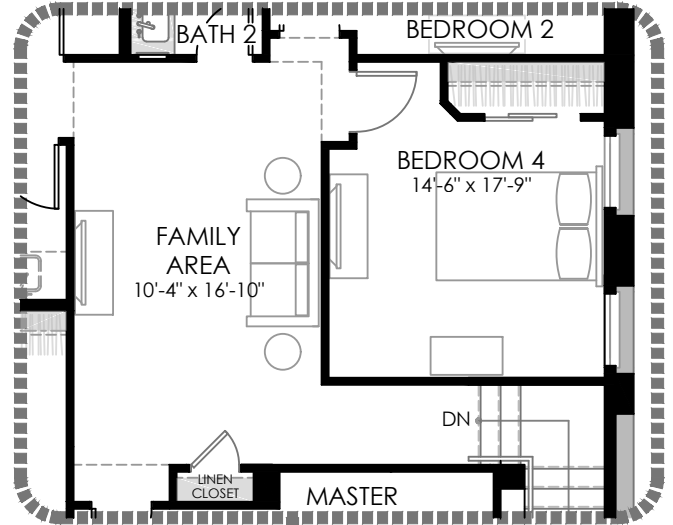
PARAGON.LIFE
BUILDERS

2,327 SQUARE FEET

- 3 TO 4 BEDROOMS
- 2.5 BATHROOMS
- HUGE OPEN LOFT AREA
- COVERED FRONT ENTRY
- COVERED REAR PATIO
- BONUS FAMILY ROOM UPSTAIRS
- 2-STORY
- 2-CAR GARAGE

PARAGON LOFTS
PLAN B

BEDROOM 4 OPTION



ALL FLOOR PLANS AND ELEVATIONS ARE CONCEPTUAL AND WILL VARY FROM THE ACTUAL CONSTRUCTION DRAWINGS AND HOMES THAT ARE BUILT. SIZES, COLORS AND FEATURES ARE APPROXIMATED FOR ILLUSTRATION PURPOSES ONLY AND MAY NOT ACCURATELY DEPICT THE FINISHED PRODUCT THAT IS CONSTRUCTED IN THIS COMMUNITY. IMAGES MAY SHOW OPTIONS AND UPGRADES, FURNITURE, AND LANDSCAPING WHICH MAY OR MAY NOT BE AVAILABLE AT THE TIME OF PURCHASE. ALSO, IF SPECIFIC CONSTRUCTION DEADLINES HAVE PASSED, SOME OPTIONS MAY NO LONGER BE AVAILABLE FOR PURCHASE AND INSTALL. MODELS AND DEMONSTRATION HOMES MAY DISPLAY DECORATOR ITEMS AND FURNITURE THAT ARE NOT AVAILABLE FOR PURCHASE. PLEASE VISIT THE COMMUNITY FOR DETAILED INFORMATION AND DISCLOSURES ABOUT ALL ASPECTS OF THE COMMUNITY AND EACH HOME.

2ND FLOOR

SHEET
2 OF 2

- 3 TO 4 BEDROOMS
- 2.5 BATHROOMS
- HUGE OPEN LOFT AREA
- COVERED FRONT ENTRY
- COVERED REAR PATIO
- BONUS FAMILY ROOM UPSTAIRS
- 2-STORY
- 2-CAR GARAGE